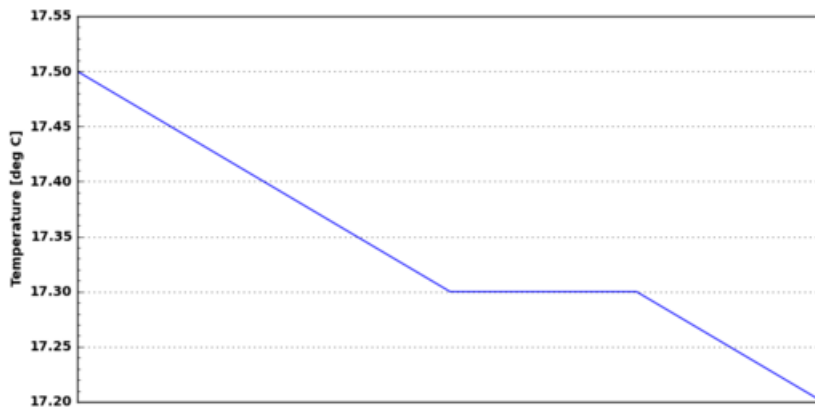

Atmospheric measurement data

Recent atmospheric measurements at TROPOS

The continuous operation of numerous instruments at TROPOS enables the permanent observations of atmospheric parameters. On this page, we present a selection of illustrative measurements that are performed at TROPOS.

- Current meteorological data of the weather station of TROPOS

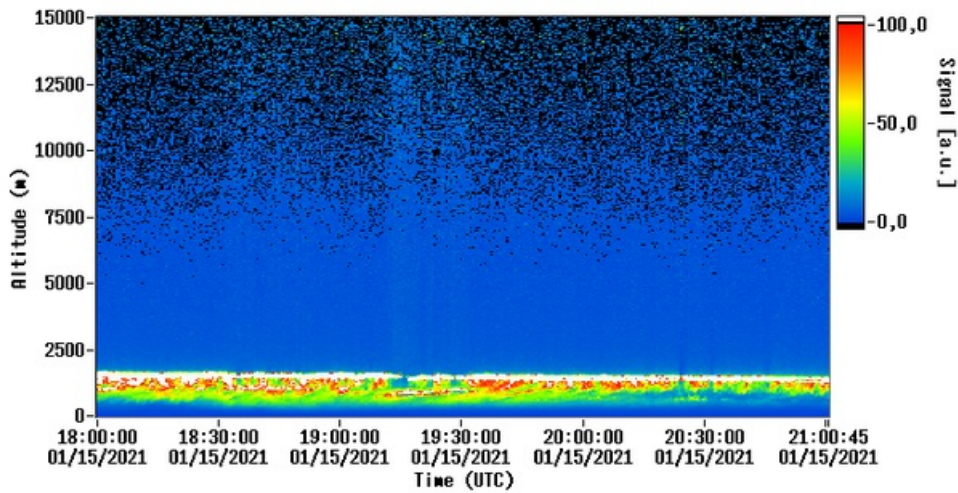


- Recent webcam images taken at TROPOS



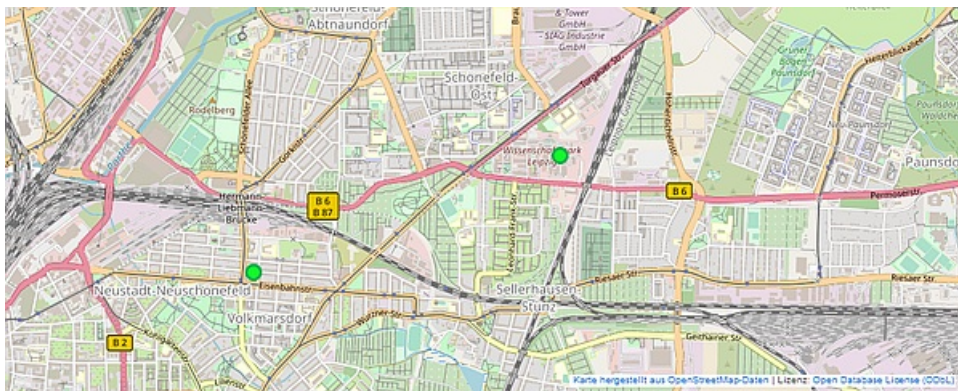
- Recent remote-sensing measurements of aerosols and clouds above Leipzig

Range-corrected signal@1064nm, Pollyarielle, Leipzig, Germany



No actual data available

- Current in-situ aerosol data Leipzig



**Leibniz-Institut für
Troposphärenforschung e.V. (TROPOS)**

Permoserstraße 15
04318 Leipzig

Phone: ++49 (341) 2717 7060
Fax: ++49 (341) 2717 99 7060

Follow us on Twitter:
@TROPOS_de



The Leibniz Institute for Tropospheric Research is a member of the Leibniz Association.

© 2022 Leibniz Institute for Tropospheric Research. All rights reserved.